

MarTest 800 a4 / 800 a6 / 800 a8 / 800 a3/8 / 800 a1/4"

Mounting Shaft

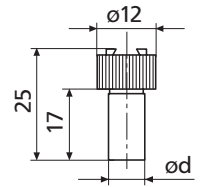
FEATURES

- Clamping shafts on the housing can be moved on dovetail guide rails
- Clamping in any position with milled nut (no tools required)



TECHNICAL DATA

Order no.	Mounting shaft	Mounting shaft	Product type
	mm	inch	
4305885	4		800 a4
4301865	6		800 a6
4305865	8		800 a8
4305875		.375"	800 a3/8
4305895		.25"	800 a1/4"



MarTest 800 h1

Holder

FEATURES

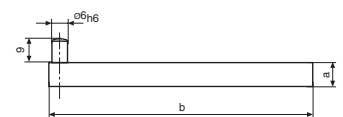
- Used for holding dial test indicator measuring devices on machine tools in conjunction with the 800k universal clamp



TECHNICAL DATA

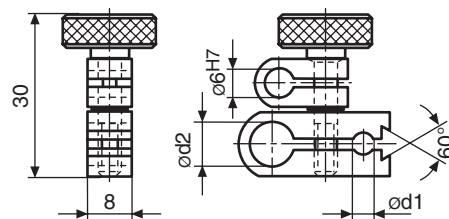
Order no.	Product type
4305888	800 h1

Order no.	Cross-section	a	b
4305888	9x9	9	100



ACCESSORIES

Order no.	Product name	Product type
4305891	Universal clamp, $\phi d1 = 4$ mm, $\phi d2 = 8$ mm, dovetail clamp	800 k8



800 k8;800 k3/8"

MarTest 800 hs8

Universal Holder with Dovetail Clamp

FEATURES

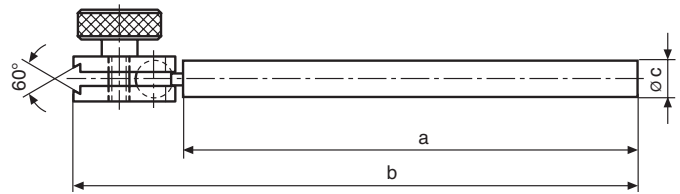
- For aligning and centering work pieces on machine tools
- Pivoting holding clamp for dovetail



TECHNICAL DATA

Order no.	Product type
4305886	800 hs8

Order no.	a	b	c
	mm	mm	mm
4305886	100	124	8



MarTest 801 v

Measuring and Centering Arm

FEATURES

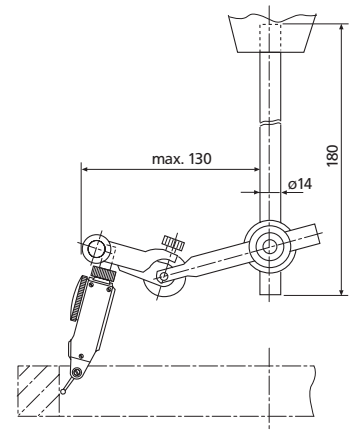
- For aligning and centering work pieces on machine tools
- Pivoting holding clamp with integrated precision adjustment
- Stainless steel struts



TECHNICAL DATA

Order no.	Product type
4309070	801 v

Order no.	Mounting hole	Swivel range of mounting clamp
4309070	8 mm	180



ACCESSORIES

Order no.	Product name
4305865	Mounting shaft ø 8 mm



800 a6;800 a8;800 a3/8;800 a4;800 a1/4"

MarTest 801 p

Measuring Stand

FEATURES

Perfect for measurements with small dial indicators and dial test indicator measuring devices

- Pivoting holder with \varnothing 8 and \varnothing 4 mm mount and dovetail profile for dial test indicator measuring devices
- Stainless steel column
- Base with V-groove



TECHNICAL DATA

Order no.	Product type
4309090	801 p

Order no.	Base surface	Column diameter	Height	Mounting hole	V-angle
4309090	65 x 40 mm	8 mm	150 mm	4 and 8 mm	140°

MarTest 800 b

Universal Centering Support Frame

FEATURES

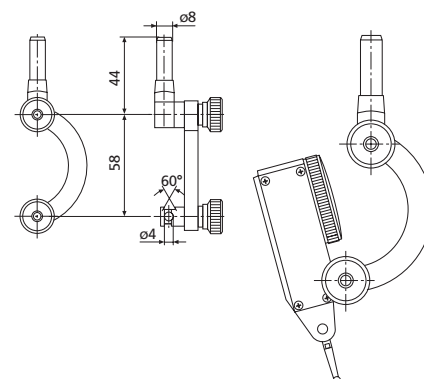
- For aligning and centering work pieces on machine tools
- Pivoting holding clamp



TECHNICAL DATA

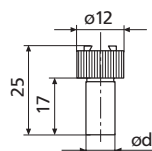
Order no.	Product type
4305893	800 b

Order no.	Mounting hole
4305893	4 mm



ACCESSORIES

Order no.	Product name	Product type
4305885	Mounting shaft \varnothing 4 mm	800 a4

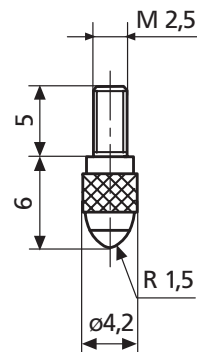


800 a6;800 a8;800 a3/8;800 a4;800 a1/4"

MarCator 901 / 901 H / 901 R

Standard Contact Point

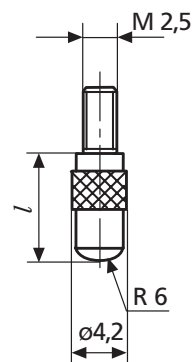
Order no.	Product type	l mm	Measurement surface radius mm	Measuring surface
4360001	901	6	1.5	steel
4360002	901 H	6	1.5	carbide
4360003	901 R	6	1.5	ruby



MarCator 902 / 902 H

Spherical Contact Point

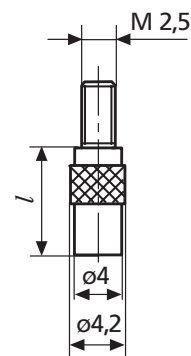
Order no.	Product type	l mm	Measuring surface ϕ mm	Measurement surface radius mm	Measuring surface
4360007	902	4	4	6	steel
4360008	902	5	4	6	steel
4360009	902	6	4	6	steel
4360010	902	8	4	6	steel
4360011	902	10	4	6	steel
4360012	902	12	4	6	steel
4360013	902	15	4	6	steel
4360014	902	20	4	6	steel
4360015	902	25	4	6	steel
4360016	902	30	4	6	steel
4360017	902	35	4	6	steel
4360018	902	50	4	6	steel
4360019	902	40	4	6	steel
4360020	902	75	4	6	steel
4360026	902	45	4	6	steel
4360029	902	95	4	6	steel
4360031	902	55	4	6	steel
4360035	902	65	4	6	steel
4360036	902	85	4	6	steel
4360040	902 H	8	4	6	carbide
4360041	902 H	10	4	6	carbide
4360042	902 H	12	4	6	carbide
4360043	902 H	15	4	6	carbide
4360044	902 H	20	4	6	carbide
4360045	902 H	25	4	6	carbide
4360046	902 H	30	4	6	carbide
4360047	902 H	35	4	6	carbide
4360048	902 H	50	4	6	carbide
4360049	902 H	40	4	6	carbide
4360050	902 H	45	4	6	carbide



MarCator 903 / 903 H

Flat Contact Point

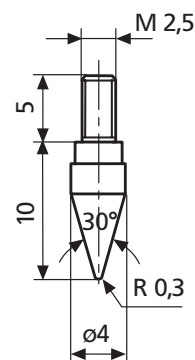
Order no.	Product type	l	Measuring surface ϕ		Measuring surface
			mm	mm	
4360070	903	4		4	steel
4360071	903	6		4	steel
4360072	903	8		4	steel
4360073	903	10		4	steel
4360074	903	12		4	steel
4360075	903	15		4	steel
4360076	903	20		4	steel
4360077	903	25		4	steel
4360300	903	30		4	steel
4360078	903	35		4	steel
4360079	903	50		4	steel
4360101	903 H	6		4	carbide
4360102	903 H	8		4	carbide
4360103	903 H	10		4	carbide
4360104	903 H	12		4	carbide
4360105	903 H	15		4	carbide
4360106	903 H	20		4	carbide
4360107	903 H	25		4	carbide
4360110	903 H	30		4	carbide
4360108	903 H	35		4	carbide
4360111	903 H	40		4	carbide
4360310	903	40		4	steel
4360109	903 H	50		4	carbide



MarCator 904 / 904 H

Conical Contact Point

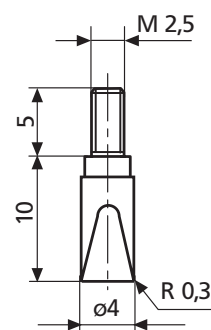
Order no.	Product type	l	Measurement surface radius		Angle α	Measuring surface
			mm	mm		
4360130	904	10		0.3	30	steel
4360131	904 H	10		0.3	30	carbide



MarCator 905 / 905 H

Wedge Shaped Contact Points

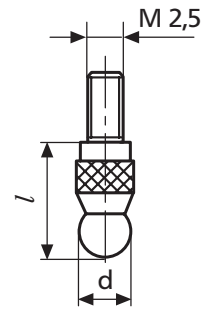
Order no.	Product type	l	Measuring surface ϕ		Measurement surface radius	Measuring surface
			mm	mm		
4360140	905	10		4	0.3	steel
4360141	905 H	10		4	0.3	carbide



MarCator 906 H

Ball Contact Points

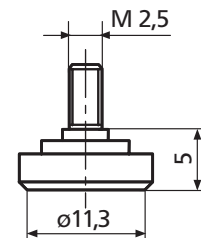
Order no.	Product type	d		l	Measuring surface
		mm	mm		
4360150	906 H	1	8.5		carbide
4360151	906 H	1.25	8.5		carbide
4360152	906 H	1.5	8.5		carbide
4360153	906 H	1.75	8.5		carbide
4360154	906 H	2	8.5		carbide
4360155	906 H	2.5	8.5		carbide
4360156	906 H	3	8.5		carbide
4360157	906 H	3.5	8.5		carbide
4360158	906 H	4	8.5		carbide
4360159	906 H	4.5	8.5		carbide
4360160	906 H	5	9		carbide
4360161	906 H	5.5	9		carbide
4360162	906 H	6	9		carbide
4360163	906 H	6.35	9		carbide
4360164	906 H	6.5	10		carbide
4360165	906 H	7	10		carbide
4360166	906 H	7.5	11		carbide
4360167	906 H	8	11		carbide
4360168	906 H	8.5	12		carbide
4360169	906 H	9	12		carbide
4360170	906 H	10	13		carbide



MarCator 907 / 907 H

Flat Contact Plates

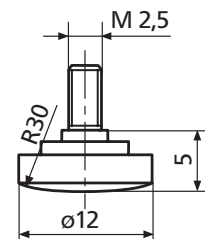
Order no.	Product type	l	Measuring surface		Measuring surface
			mm	cm ²	
4360200	907	5	1	11.3	steel
4360201	907 H	5		7	carbide



MarCator 908 / 908 H

Spherical Contact Plates, Steel

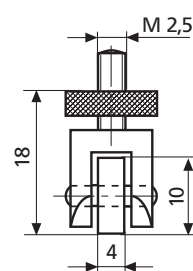
Order no.	Product type	l	Measuring surface ø		Measuring surface
			mm	mm	
4360210	908	5	12	30	steel
4360211	908 H	5	12	30	carbide



MarCator 909 A / 909 B

Measuring Rollers

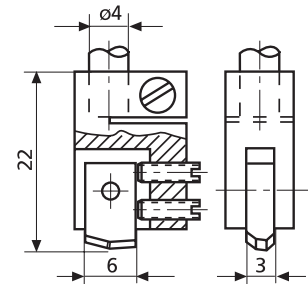
Order no.	Product type	l	Measurement surface radius		Measuring surface
			mm	mm	
4360220	909 A	18		3	steel
4360221	909 B	18	5	3	steel



MarCator 910 H

Measuring Attachment

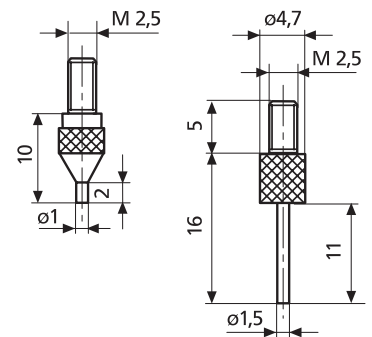
Order no.	Product type	l	Measuring surface
		mm	
4360230	910 H	22	carbide



MarCator 911 H1 / 911 H2 / 911

Pin Contact Point

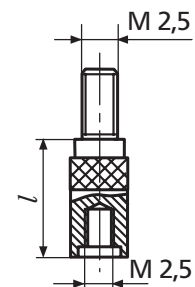
Order no.	Product type	l	Measuring surface ø	Measuring surface
		mm	mm	
4360240	911 H1	2	1	carbide
4360241	911 H2	11	1.5	carbide
4360280	911	15	1.5	steel
4360281	911	20	1.5	steel
4360282	911	25	1.5	steel
4360283	911	30	1.5	steel
4360284	911	35	1.5	steel
4360285	911	40	1.5	steel
4360286	911	50	1.5	steel



MarCator 912

Measuring Spindle Extension

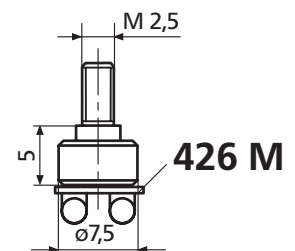
Order no.	Product type	d	l
		mm	mm
4360250	912	4	10
4360251	912	4	15
4360252	912	4	20
4360253	912	4	25
4360254	912	4	35
4360255	912	4	50
4360256	912	4	75
4360257	912	4	100



MarCator 913

Flat Contact Point

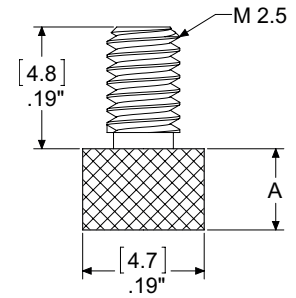
Order no.	Product type	Measuring surface ø
		mm
4360400	913	7.5



MarCator EAL-1016-W1 / EAL-1016-W2 / EAL-1016-W3 / EAL-1016-W4 / EAL-1016-W5

Flat Contact Point

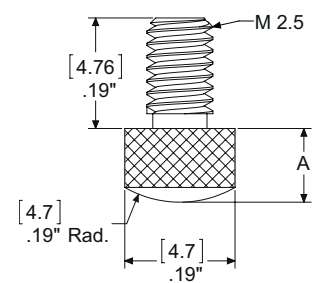
Order no.	Product type	Dimension A mm	Length mm	Measuring surface	Number
2208646	EAL-1016-W1	6	6	hardened steel	1
2208647	EAL-1016-W2	10	10	hardened steel	1
2208648	EAL-1016-W3	15	15	hardened steel	1
2208649	EAL-1016-W4	20	20	hardened steel	1
2208650	EAL-1016-W5	25	25	hardened steel	1



MarCator EPT-1037-W1 / EPT-1037-W2 / EPT-1037-W3 / EPT-1037-W4 / EPT-1037-W5 / EPT-1037-W6

Radiused Surface Contact Point

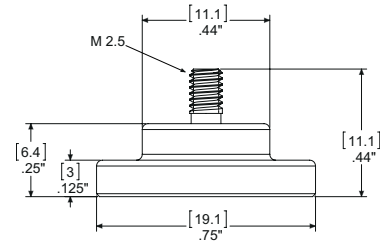
Order no.	Product type	Dimension A mm	Length mm	Measurement surface radius mm	Measuring surface	Number
2216191	EPT-1037-W1	6	6	4.6	hardened steel	1
2216192	EPT-1037-W2	10	10	4.6	hardened steel	1
2216193	EPT-1037-W3	12	15	4.6	hardened steel	1
2216194	EPT-1037-W4	15	20	4.6	hardened steel	1
2216195	EPT-1037-W5	20	25	4.6	hardened steel	1
2216196	EPT-1037-W6	25	12	4.6	hardened steel	1



MarCator EAL-1020-W1 / EAL-1020-W2 / EAL-1020-W3 / EAL-1020-W4 / EAL-1021

Wide Face Contact Point

Order no.	Product type	Dimension A mm	B mm	Measuring surface	Number
2208654	EAL-1020-W1	9.04	6.35	hardened steel	1
2208655	EAL-1020-W2	12.7	9.50	hardened steel	1
2208656	EAL-1020-W3	15.6	12.70	hardened steel	1
2208657	EAL-1020-W4	18.6	15.90	hardened steel	1
2208658	EAL-1021	9.04	6.35	carbide tipped	1



MarCator AD-185

Thread Adapter, M2.5 male to #4-48 female Threads

Order no.	Product type
2201833	AD-185

MarCator 941 G

Straight Holder

FEATURES

For measuring devices and in combination with standard measuring instruments, where the measuring instrument has to be moved away.

- Package contains: contact point 901



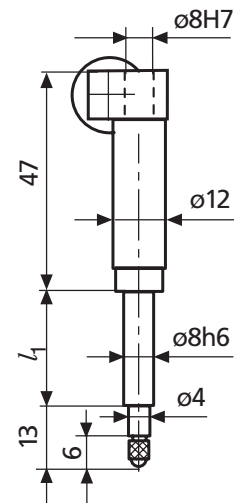
Application:

- For all types of measuring devices
- To be used in conjunction with a dial indicator or an inductive probe
- To position the measuring instrument at a certain angle

TECHNICAL DATA

Order no.	Length l1	Transmission	Product type
	mm		
4365000	25	3 mm	941 G
4365001	50	3 mm	941 G
4365002	75	3 mm	941 G

Order no.	Length l1
	mm
4365000	25
4365001	50
4365002	75



MarCator 941 W

Angular Holder

FEATURES

For measuring devices and in combination with standard measuring instruments, where tilting of the measuring instrument is required.

- **Package contains:** contact point 901, contact point 903 (l = 10 mm)



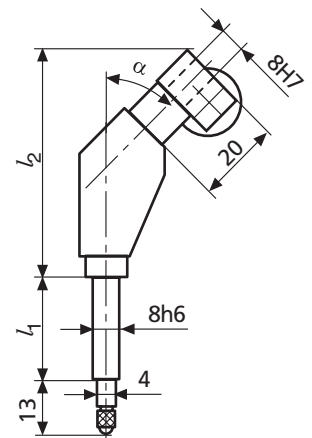
Application:

- For all types of measuring devices
- To be used in conjunction with a dial indicator or an inductive probe
- To be positioned (tilted) at the measurement direction and also at a certain distance or angle

TECHNICAL DATA

Order no.	Length I1	Length I2	Transmission	Product type
	mm	mm		
4365010	25	53.7	3 mm	941 W
4365011	50	53.7	3 mm	941 W
4365020	25	49.3	3 mm	941 W
4365021	50	49.3	3 mm	941 W
4365022	75	49.3	3 mm	941 W
4365030	25	34.5	3 mm	941 W
4365031	50	34.5	3 mm	941 W
4365032	75	34.5	3 mm	941 W

Order no.	Angle	Length I1	Length I2
	°	mm	mm
4365010	45	25	53.7
4365011	45	50	53.7
4365020	60	25	49.3
4365021	60	50	49.3
4365022	60	75	49.3
4365030	90	25	34.5
4365031	90	50	34.5
4365032	90	75	34.5



MarCator AT-25 / AT-26

Auxiliary Plunger 57 mm/ 2.25" long

FEATURES

For extending reach of all ANSI/ AGD type and perpendicular indicators with .375" diameter stems and ranges up to 6.35 mm/ .250" range. Attaches to indicator stem by integral split collet. Body is 12 mm/ .500" O.D.



TECHNICAL DATA

Order no.	Mounting hole	Length	Length	Product type
	inch	mm	inch	
2203153	3/8"	57	2.25"	AT-25
2203154	3/8"	104	4"	AT-26

ACCESSORIES

Order no.	Product name	Product type
2225781	Spherical contact point, 8-32 thread, for AT-26	PT-184

MarCator AT-7293 / AT-7294

Hole Attachment, 47.50 mm / 1.87" long

FEATURES

For ANSI/AGD type and perpendicular indicators with .375" diameter stems. For measuring internal surfaces.



TECHNICAL DATA

Order no.	Mounting hole	Length	Length	Product type
2203160	inch	mm	inch	AT-7293
2203161	3/8"	47.5	1.87"	AT-7293
2203161	3/8"	25	1"	AT-7294

MarCator A-9 / AT-24

Angle Attachment for Ranges up to 3.05 mm / .120"

FEATURES

For ANSI/AGD type and perpendicular indicators (.375" diameter stems). For making measurements at right angle to spindle movement.



Application:

for ranges up to 3.05 mm / .120"

TECHNICAL DATA

Order no.	Mounting hole	Product type
2201391	inch 3/8"	A-9
2203152	3/8"	AT-24

ACCESSORIES

Order no.	Product name	Product type
2232596	Replacement spring for right angle attachment A-9	SP-56